



FRONT ELEVATION "A"
 SCALE: 1/4"=1'



RIGHT ELEVATION "A"
 SCALE: 1/4"=1'

"THE KINGFISHER II"

DATE:	10/10/2017
DRAWN BY:	JJ
REVISION DATE:	

ELEVATIONS "A"

SHEET NO.
A1

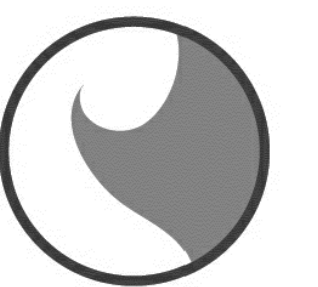


REAR ELEVATION "A"
SCALE: 1/4"=1'



LEFT ELEVATION "A"
SCALE: 1/4"=1'

"THE KINGFISHER II"

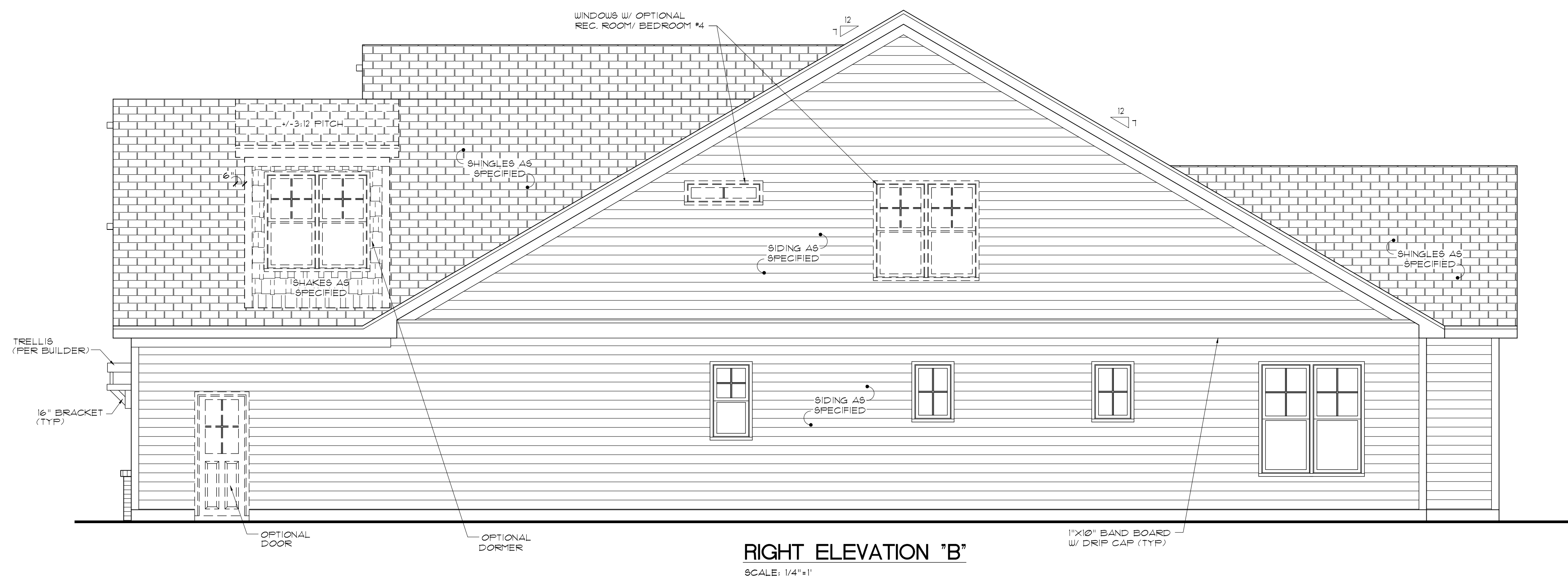


BELL RESIDENTIAL CO.

DATE: 10/10/2017
 DRAWN BY: JJ
 REVISION DATE:

ELEVATIONS "A"

SHEET NO.
A2



"THE KINGFISHER II"

DATE: 10/10/2017
 DRAWN BY: JJ
 REVISION DATE:

ELEVATIONS "B"

SHEET NO.
A3

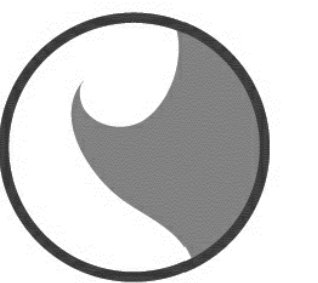


REAR ELEVATION 'B'
SCALE: 1/4"=1'



LEFT ELEVATION 'B'
SCALE: 1/4"=1'

"THE KINGFISHER II"

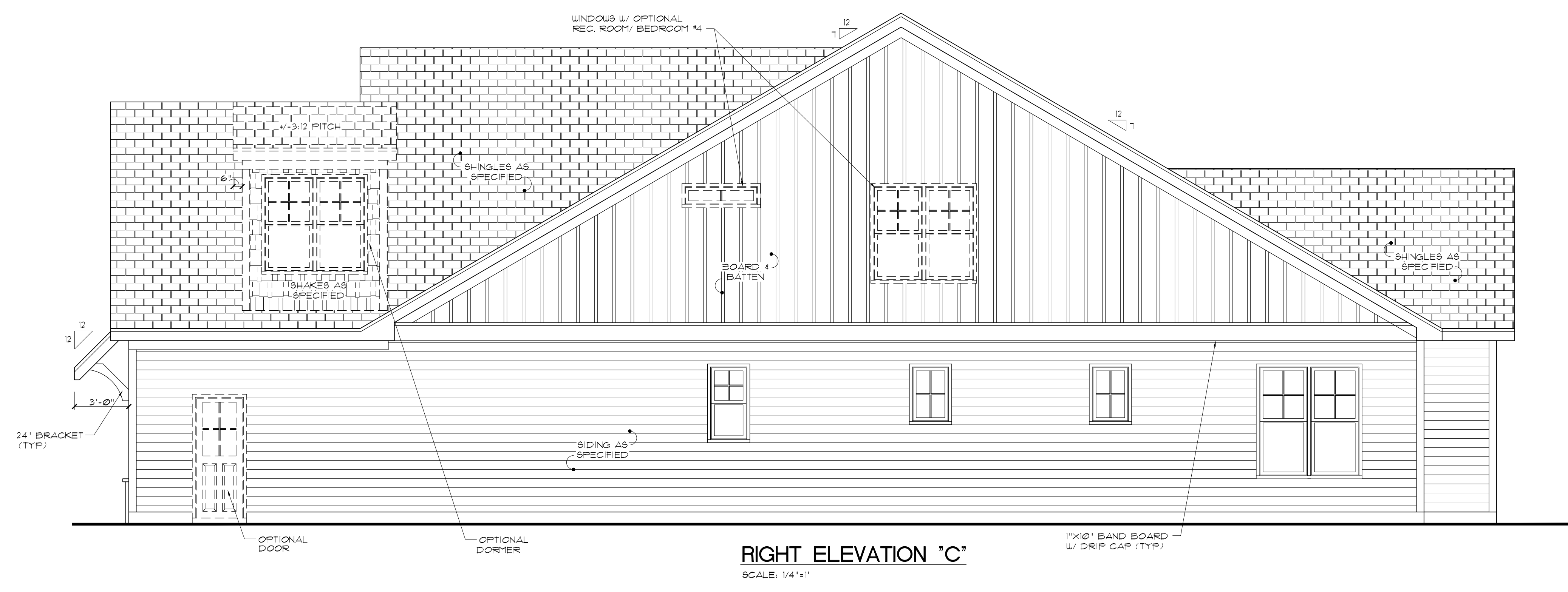


BELL RESIDENTIAL CO.

DATE: 10/10/2017
DRAWN BY: JJ
REVISION DATE:

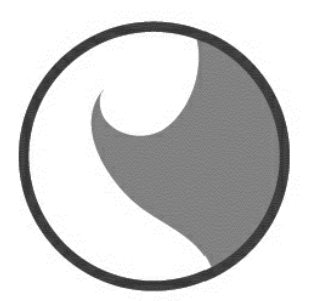
ELEVATIONS "B"

SHEET NO.
A4



www.frazierhomedesign.com
FRAZIER HOME DESIGN, LLC.
900 RIDGEFIELD DR., SUITE 170
RALEIGH, NC 27609
OFFICE: (919) 424-7245

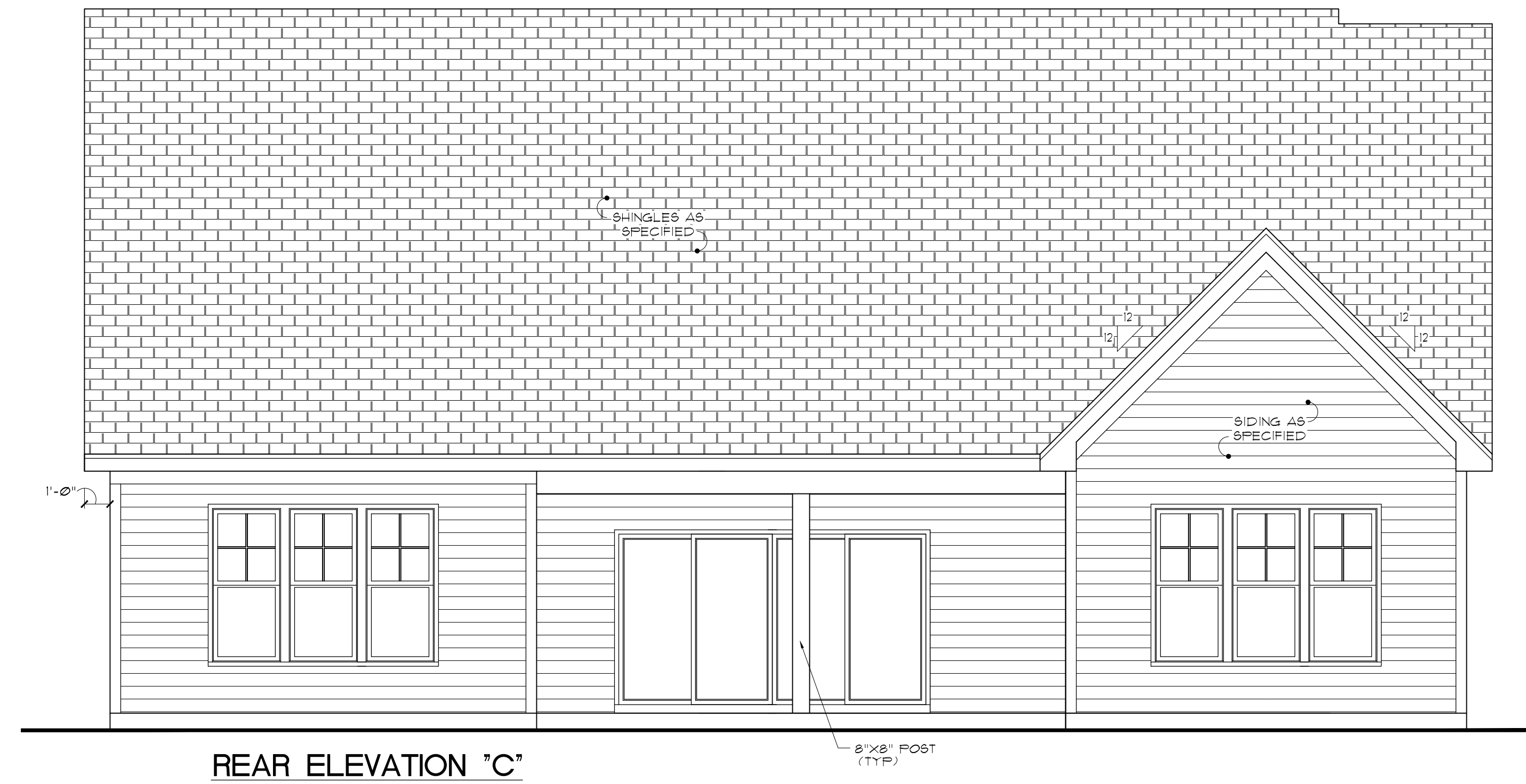
"THE KINGFISHER II"


BELL RESIDENTIAL CO.

DATE:	10/10/2017
DRAWN BY:	JJ
REVISION DATE:	

ELEVATIONS "C"

SHEET NO.
A5



REAR ELEVATION "C"
SCALE: 1/4"=1'



LEFT ELEVATION "C"
SCALE: 1/4"=1'

"THE KINGFISHER II"



BELL RESIDENTIAL CO.

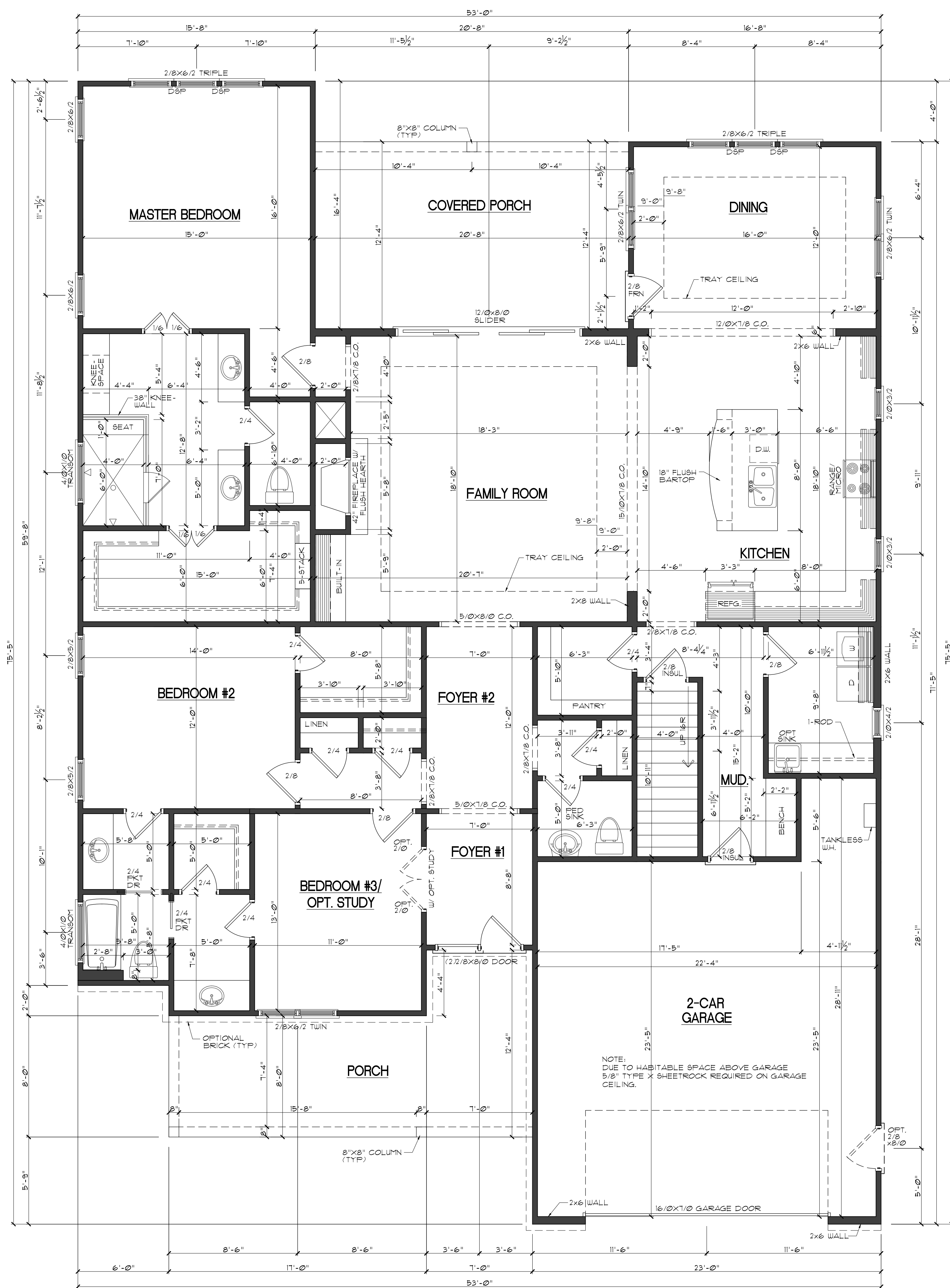
DATE: 10/10/2017
 DRAWN BY: JJ
 REVISION DATE:

ELEVATIONS "C"

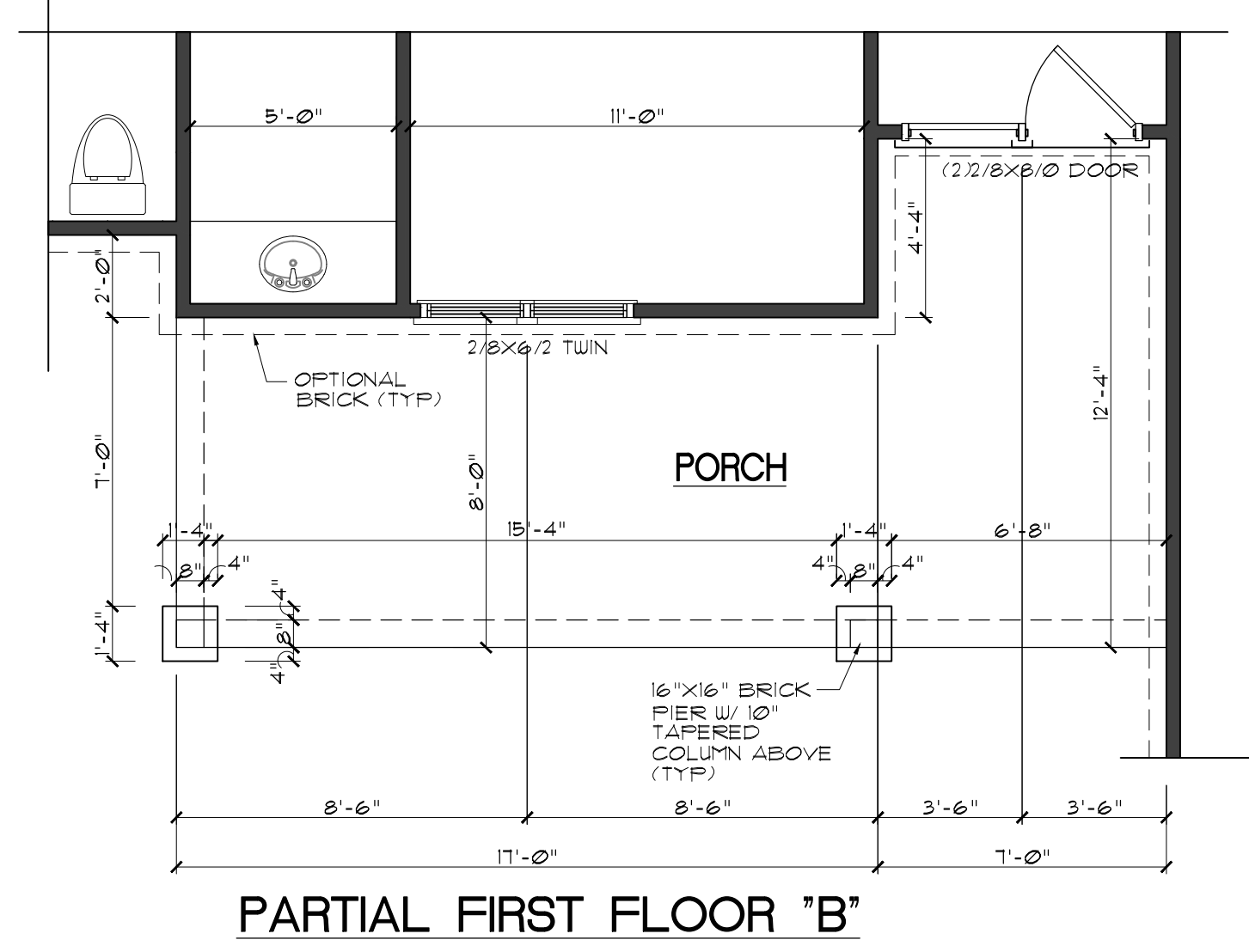
SHEET NO.
A6

PLANS ARE DESIGNED TO MEET THE REQUIREMENTS OF THE NORTH CAROLINA RESIDENTIAL CODE, 2012 EDITION

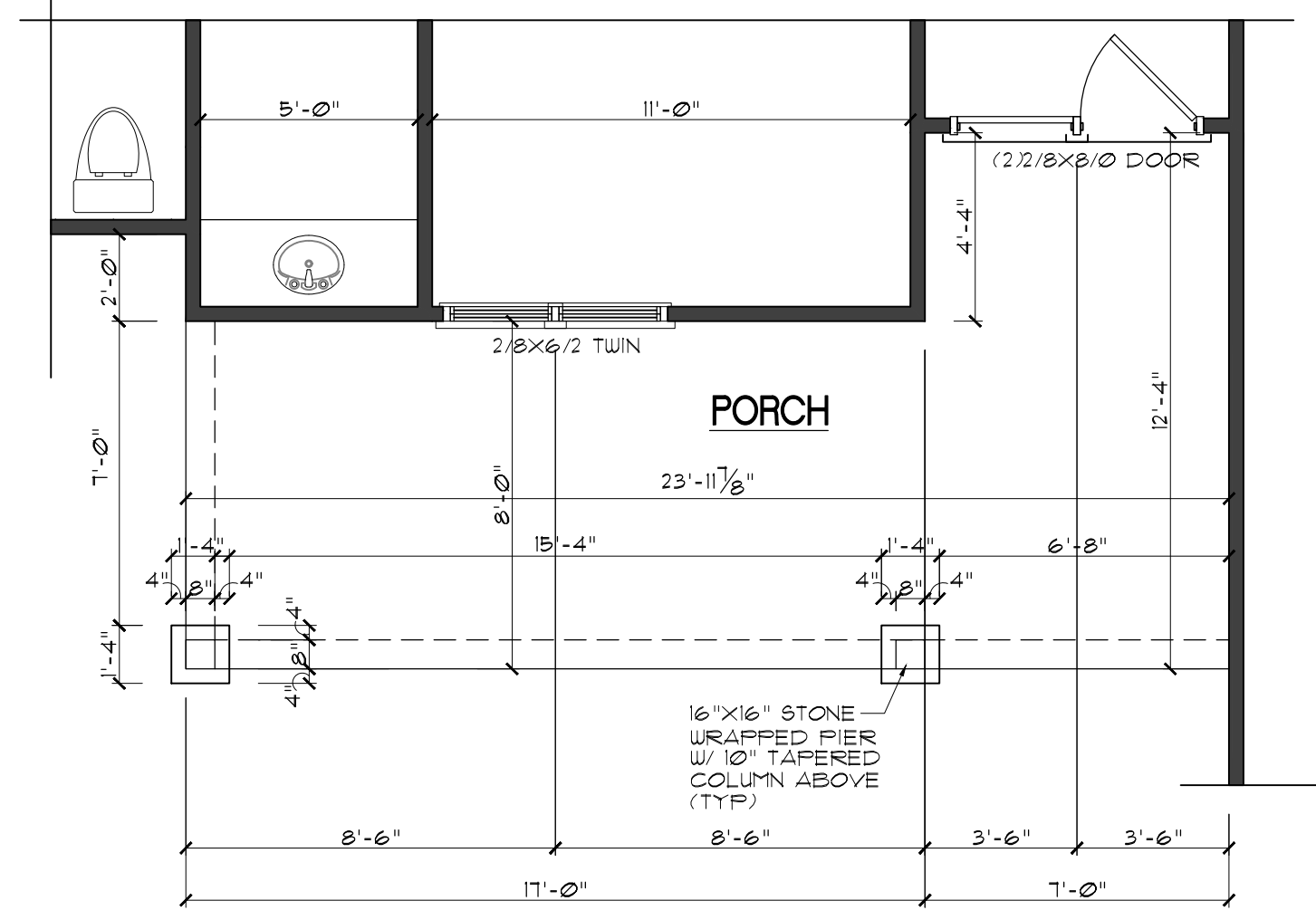
CLIMATE ZONE	FENESTRATION U-FACTOR	CEILING R-VALUE	WOOD FRAME WALL R-VALUE	MASS WALL R-VALUE	FLOOR R-VALUE	BASEMENT WALL R-VALUE	SLAB R-VALUE	CRAWL SPACE WALL R-VALUE
3	U-0.35/ SHGC-0.30	30	13	5/10	19	10/13	0	5/13
4	U-0.35/ SHGC-0.30	38	15 13+2.5	5/10	19	10/13	10.2 FT.	10/13



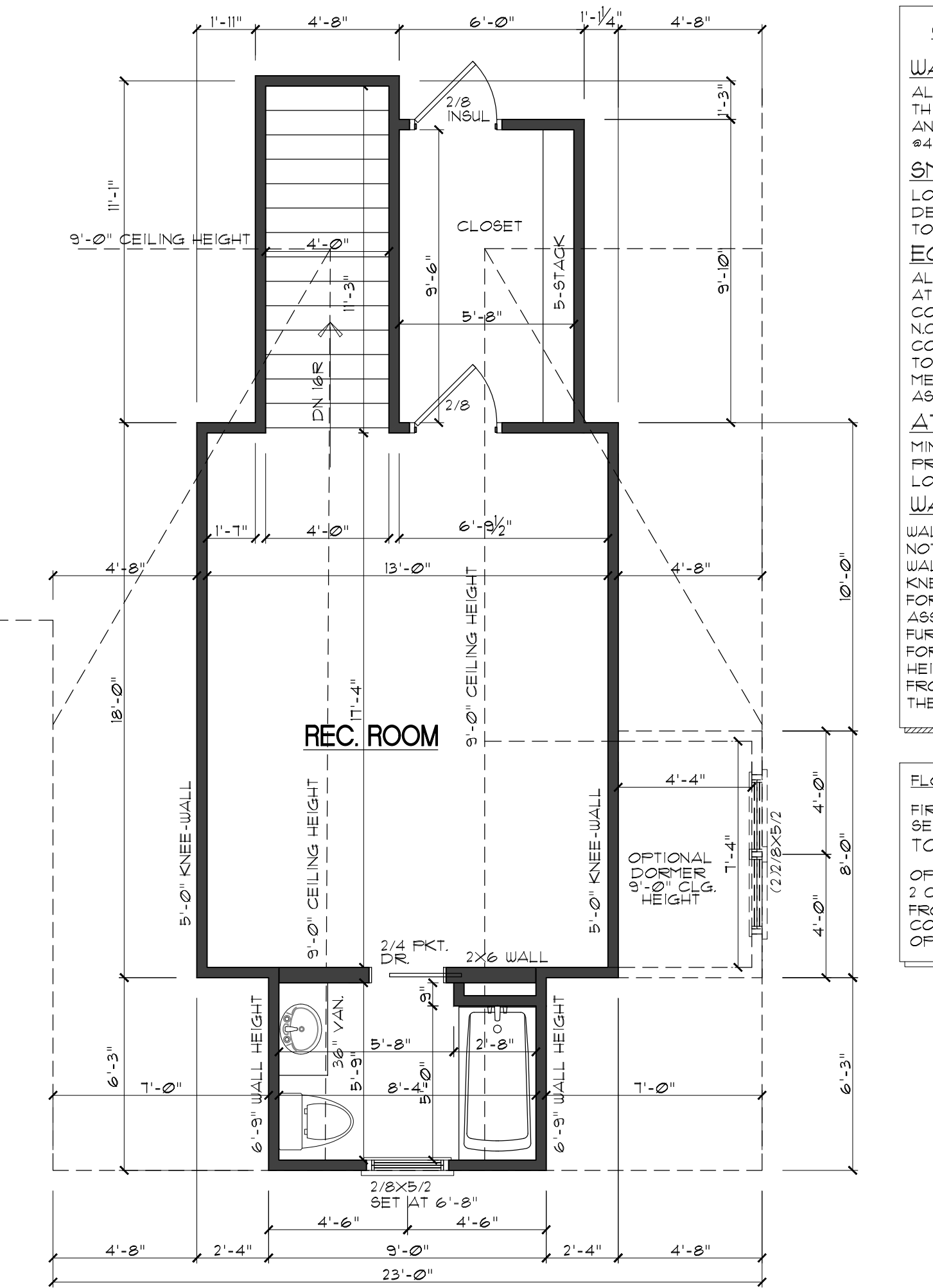
FIRST FLOOR "A"
SCALE: 1/4"=1'



PARTIAL FIRST FLOOR "B"
SCALE: 1/4"=1'



PARTIAL FIRST FLOOR "C"
SCALE: 1/4"=1'



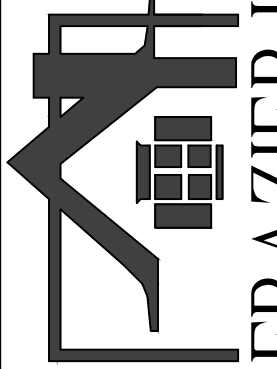
PARTIAL SECOND FLOOR "A", "B", "C"
W/ OPTIONAL REC. ROOM
SCALE: 1/4"=1'

GENERAL NOTES

- WALLS:**
ALL WALLS ARE DRAWN 4" THICK UNLESS NOTED OTHERWISE. ANGLED WALLS ARE DRAWN #45° UNO.
- SMOKE DETECTORS:**
LOCATION AND NUMBER OF DETECTORS SHALL CONFORM TO NEC.
- EGRESS:**
ALL BEDROOMS MUST HAVE AT LEAST ONE WINDOW WHICH CONFORMS TO R-310 OF THE N.C. BLDG. CODE. IT IS THE CONTRACTOR'S RESPONSIBILITY TO VERIFY CHOSEN WINDOWS MEET EGRESS REQUIREMENTS AS MANUFACTURERS VARY.
- ATTIC ACCESS:**
MIN. ATTIC ACCESS SHALL BE PROVIDED BY BUILDER AND LOCATED ON SITE.
- WALL/CEILING HGT:**
WALL AND CEILING HEIGHT NOTES ARE BASED ON NOMINAL WALL SIZE. KNEE WALL HEIGHT LABELS FOR WALLS UNDER RAFTERS ASSUME AN EXTRA 2" FOR FURRING (IN HEATED SPACES) FOR INSULATION. THE WALL HEIGHT REFERS TO THE HGT. FROM THE FLOOR DECKING TO THE BOTTOM OF THE FURRING.

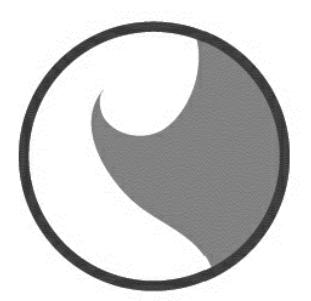
FLOOR AREA:

FIRST FLOOR HTD.	2561#
SECOND FLOOR HTD.	362#
TOTAL HTD. SQ. FT.	2923#
OPT. SECOND FLOOR HTD.	675#
2 CAR GARAGE	571#
FRONT PORCH	222#
COVERED PORCH	255#
OPT. SCREENED PORCH	255#



www.frazierhomedesign.com
FRAZIER HOME DESIGN, LLC.
900 RIDGEFIELD DR., SUITE 170
RALEIGH, NC 27609
OFFICE: (919) 424-7245

"THE KINGFISHER II"

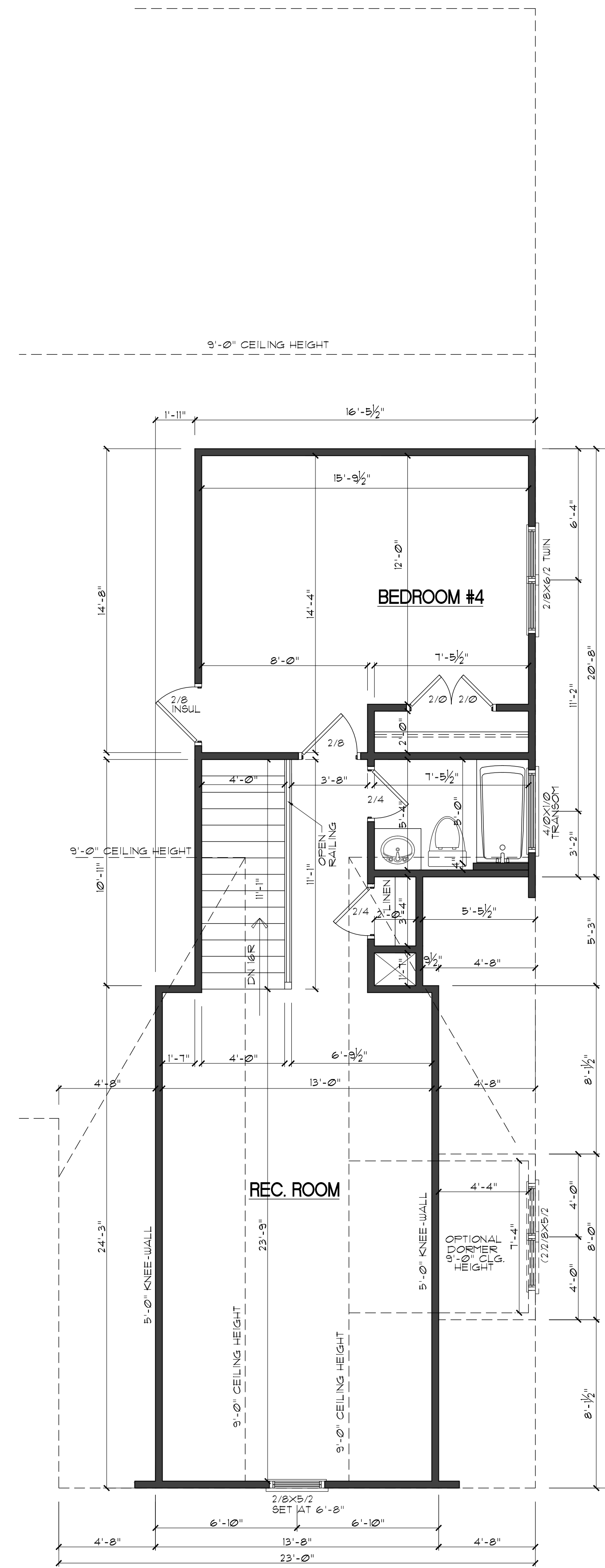


BELL RESIDENTIAL CO.

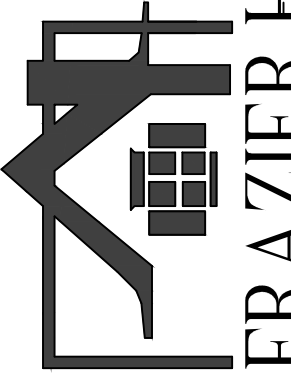
DATE: 10/10/2017
DRAWN BY: JJ
REVISION DATE:

FIRST FLOOR

SHEET NO.
A7

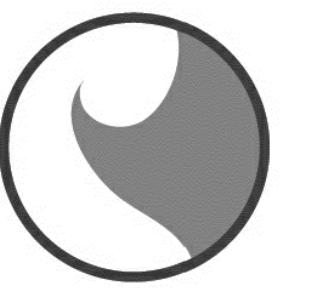


**PARTIAL SECOND FLOOR "A", "B", "C"
W/ OPTIONAL REC. ROOM/ BEDROOM #4**
SCALE: 1/4"=1'



www.frazierhomedesign.com
FRAZIER HOME DESIGN, LLC.
 900 RIDGEFIELD DR., SUITE 170
 RALEIGH, NC 27609
 OFFICE: (919) 424-7245

"THE KINGFISHER II"



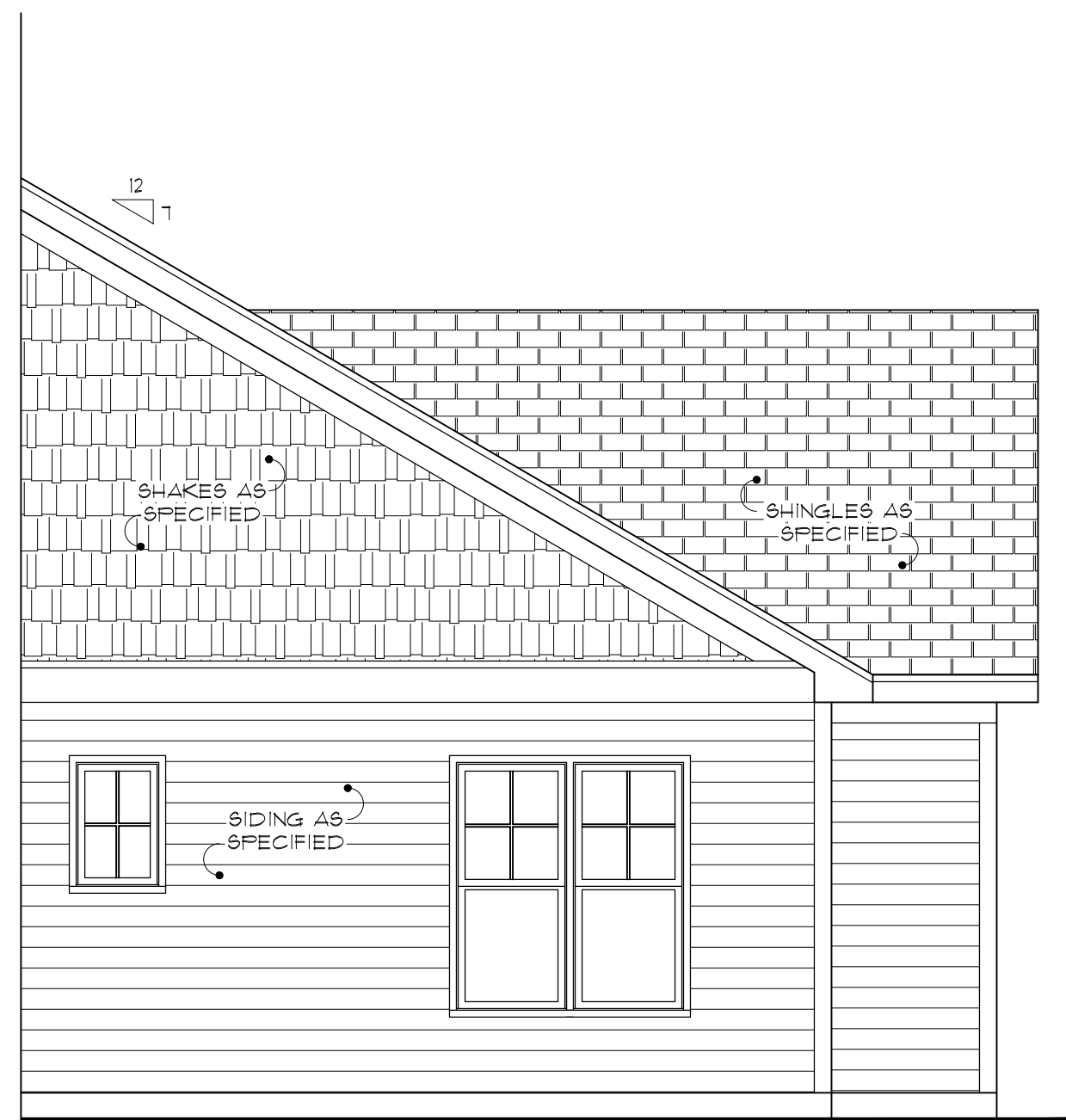
BELL RESIDENTIAL CO.

DATE: 10/10/2017
 DRAWN BY: JJ
 REVISION DATE:

FIRST FLOOR

SHEET NO.

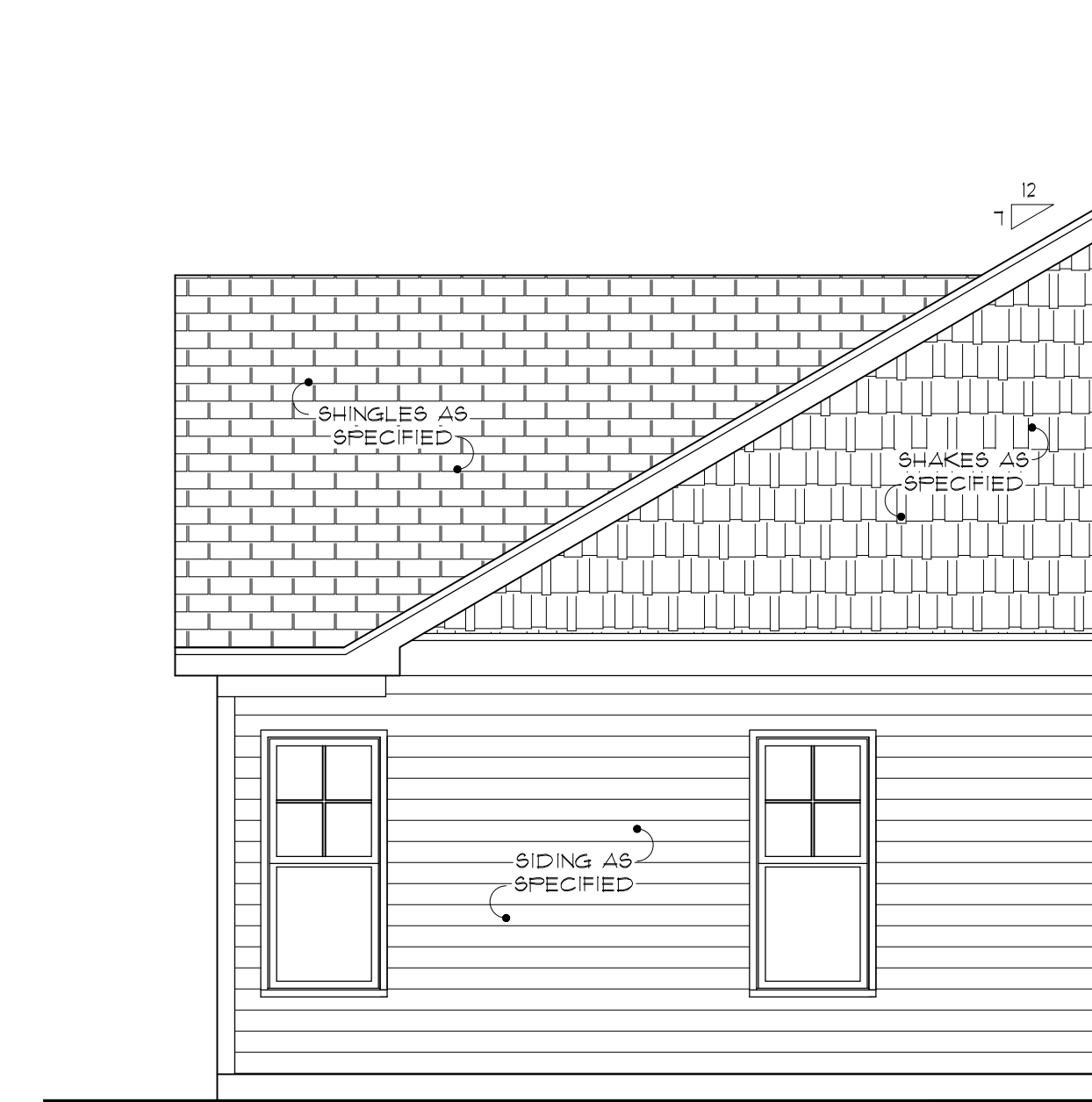
A8



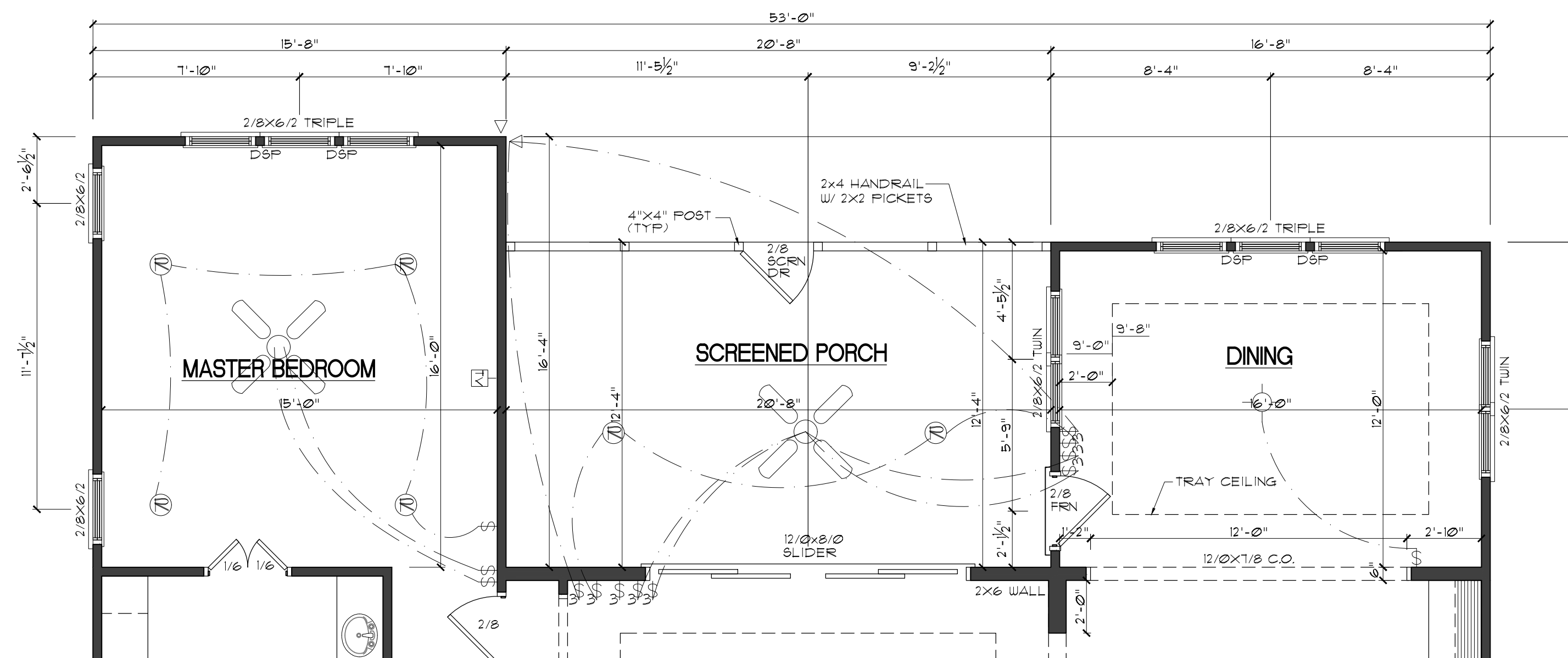
**OPTIONAL SCREENED PORCH
RIGHT ELEVATION "A"**
SCALE: 1/4"=1'



**OPTIONAL SCREENED PORCH
REAR ELEVATION "A"**
SCALE: 1/4"=1'



**OPTIONAL SCREENED PORCH
LEFT ELEVATION "A"**
SCALE: 1/4"=1'



OPTIONAL SCREENED PORCH
SCALE: 1/4"=1'

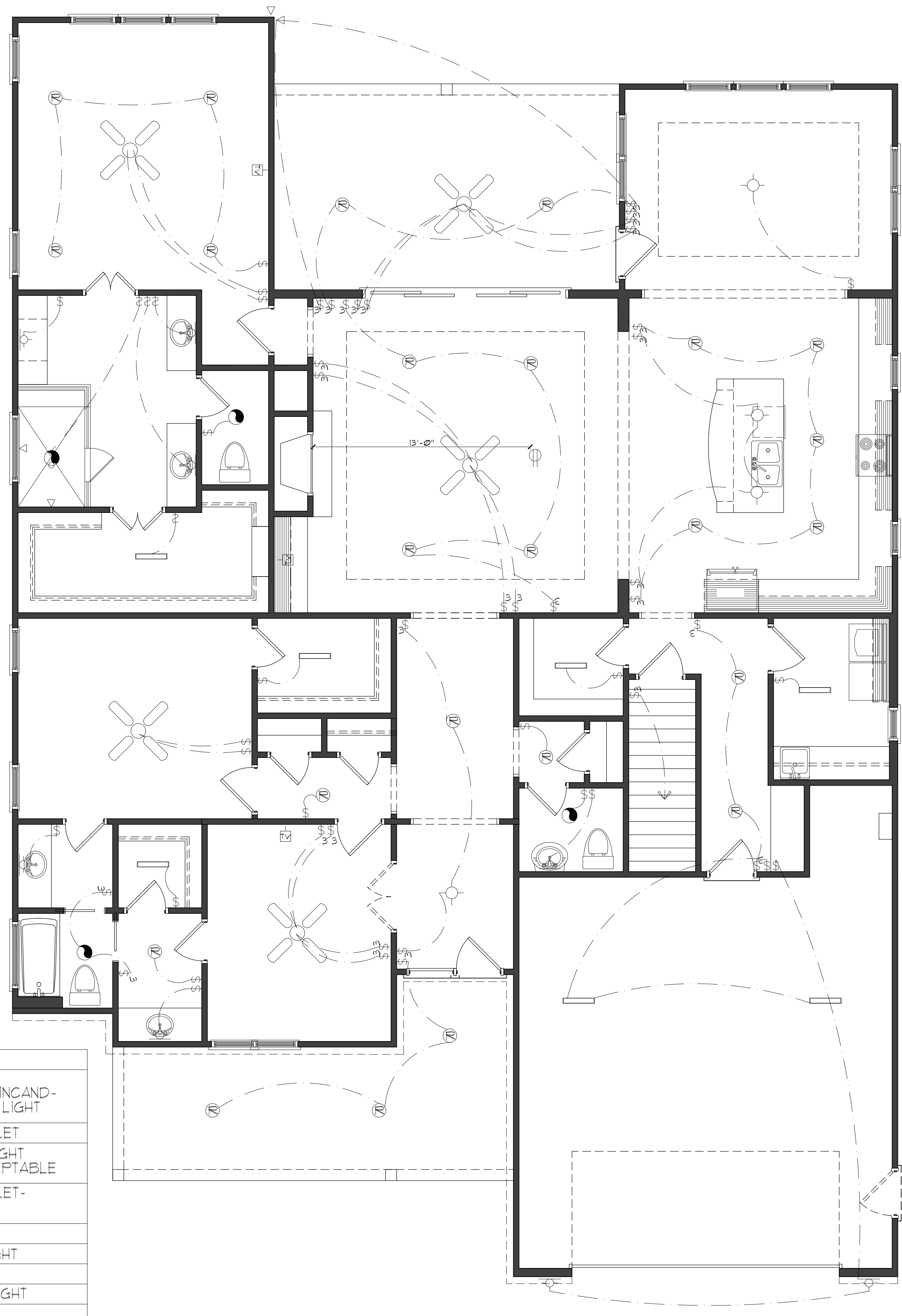
"THE KINGFISHER II"



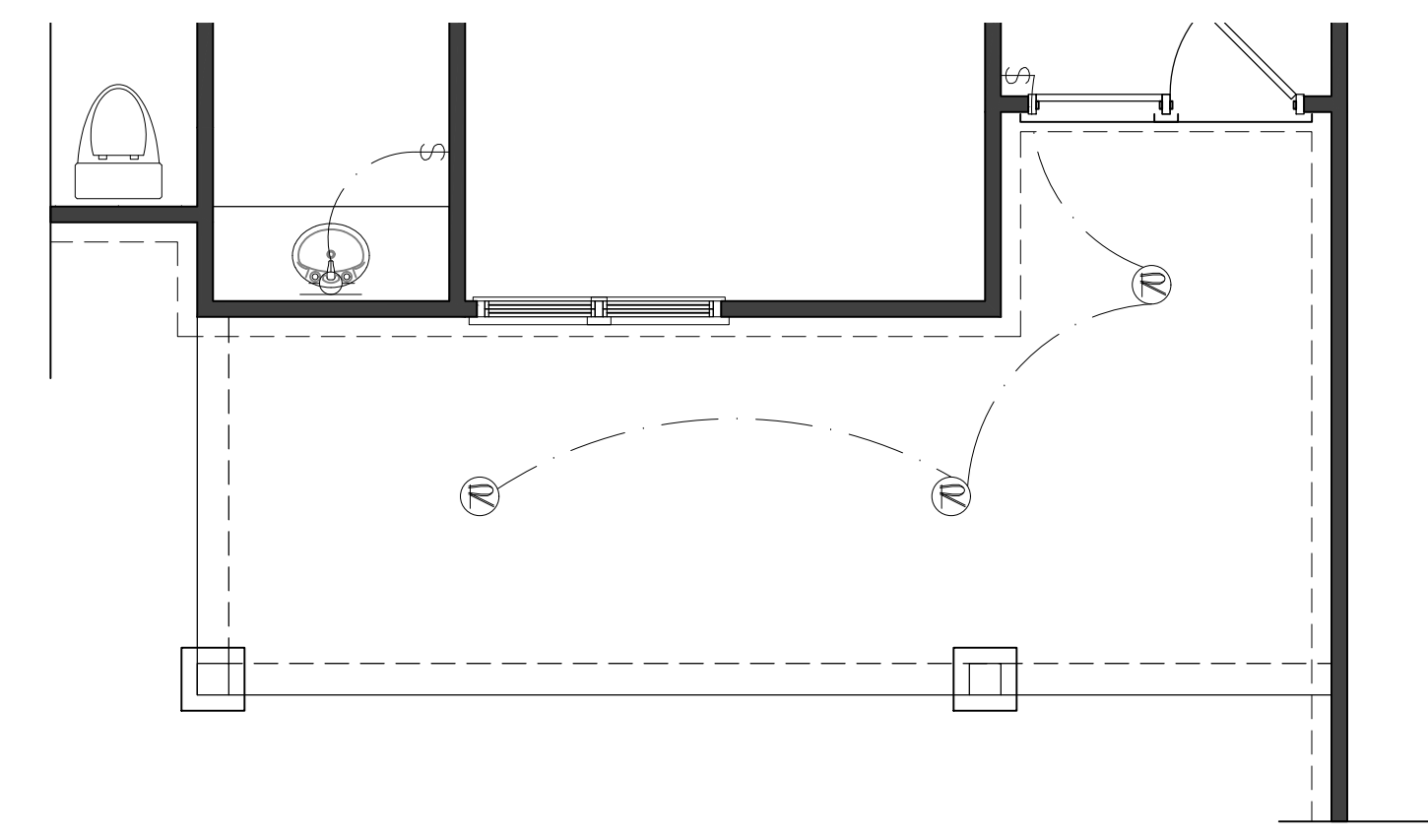
DATE: 10/10/2017
 DRAWN BY: JJ
 REVISION DATE:

**OPTIONAL
SCREENED PORCH**

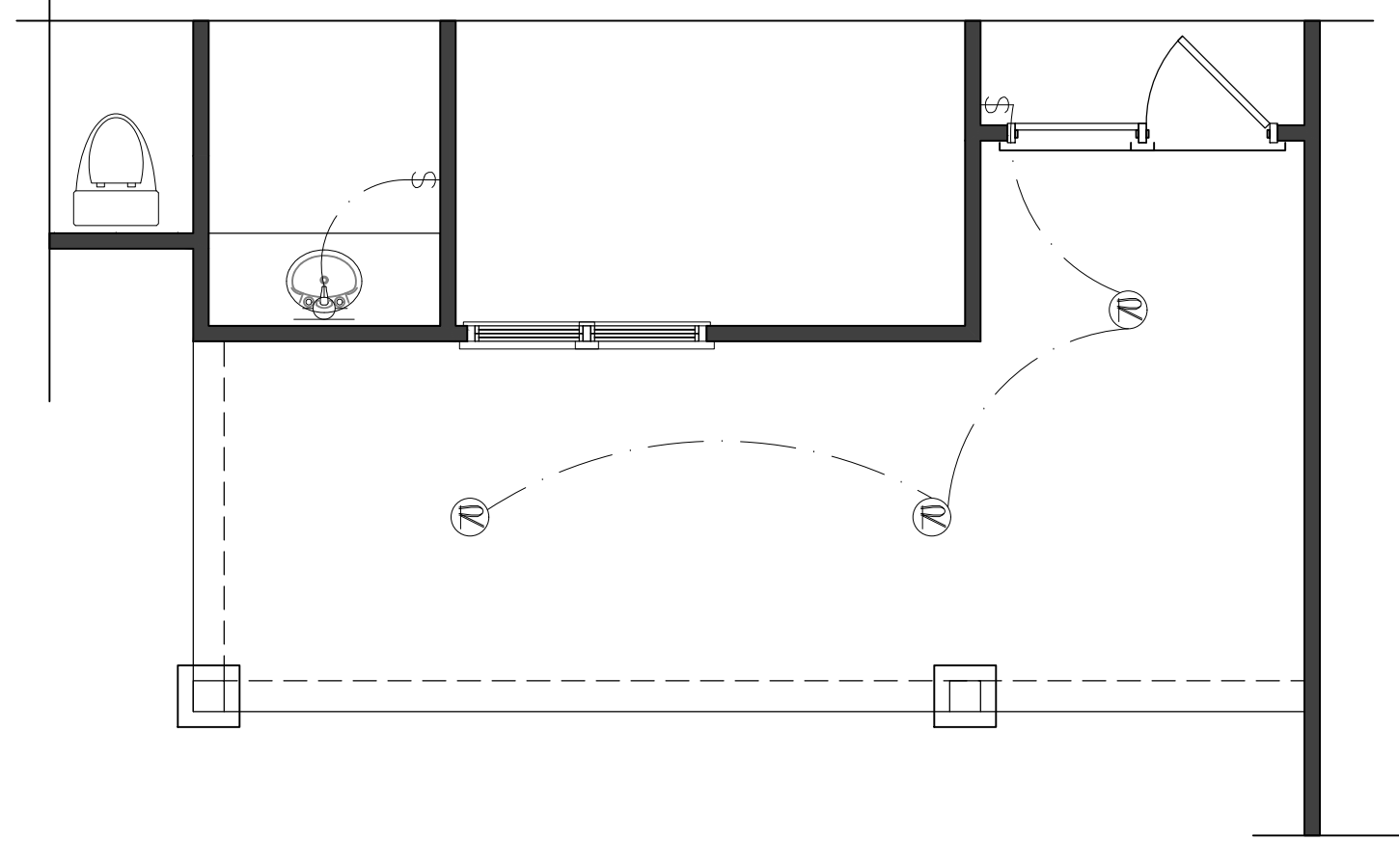
SHEET NO.
A9



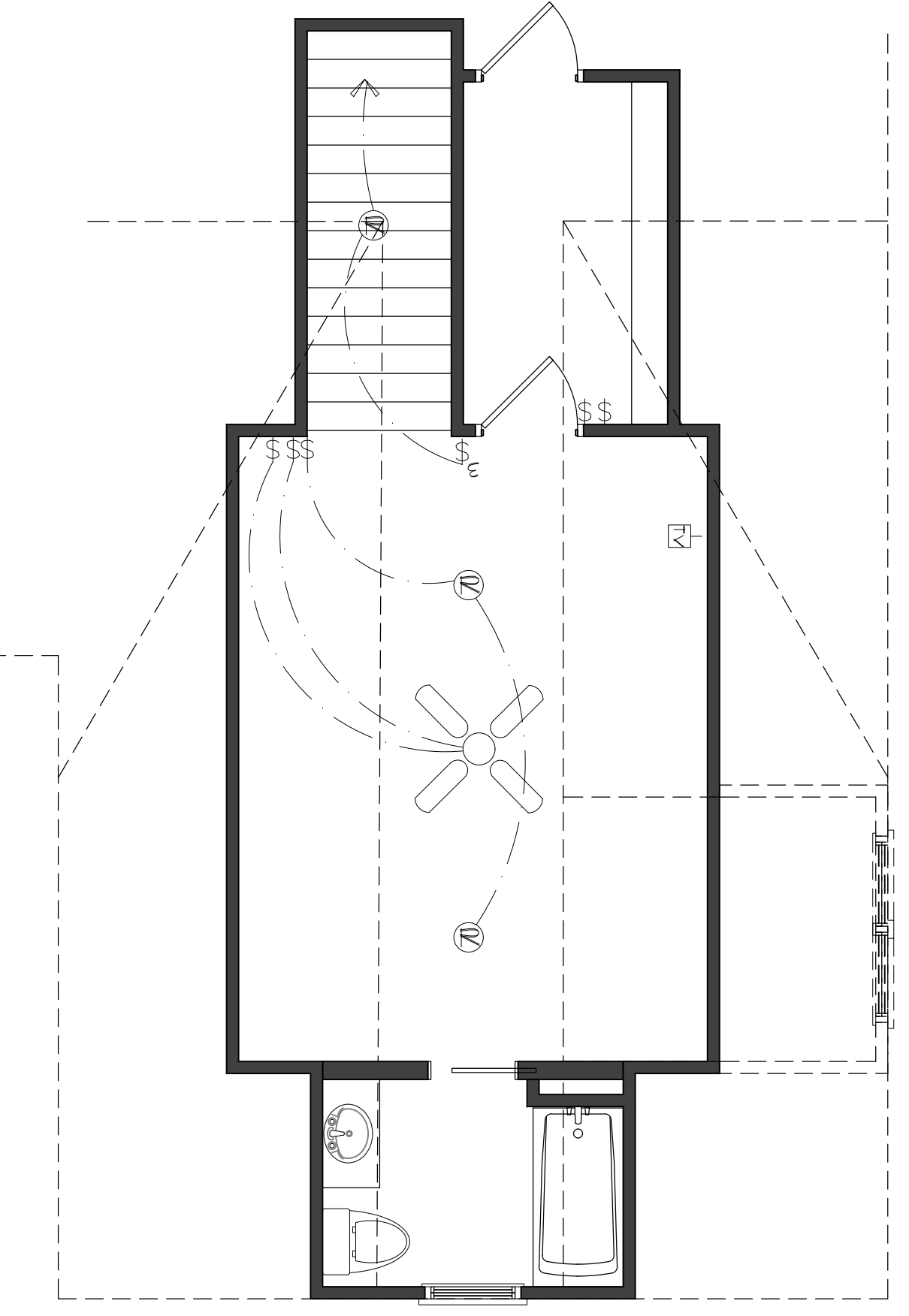
FIRST FLOOR "A"
SCALE: 1/4"=1"



PARTIAL FIRST FLOOR "B"
SCALE: 1/4"=1"



PARTIAL FIRST FLOOR "C"
SCALE: 1/4"=1"



**PARTIAL SECOND FLOOR "A", "B", "C"
W/ OPTIONAL REC. ROOM**
SCALE: 1/4"=1"

ELECTRICAL LEGEND			
⌘	4-WAY SWITCH	⊙	WALL MOUNT INCANDESCENT BAR LIGHT
⌘	SINGLE POLE SWITCH	⊕	DUPLEX OUTLET
⌘	3-WAY SWITCH	⊕ _{CH}	COUNTER HEIGHT OUTLET RECEPTABLE
⊙	SURFACE MOUNTED LIGHT	⊕	DUPLEX OUTLET-SPLIT WIRED
⌘	CABLE JACK	⊙	EXHAUST FAN
⊖	1 BULB FLUORESCENT	⊙	EYEBALL LIGHT
⊖	2 BULB FLUORESCENT	▽	SPOT LIGHT
▽	PHONE JACK	⊕	RECESSED LIGHT
⊕	GROUND FAULT INTERRUPT RECEPTABLE	⊕	CEILING FAN
⊕ _{220V}	220 VOLT RECEPTABLE		
⊕	WALL MOUNTED LIGHT		
⊕	ELECTRICAL PANEL		

www.frazierhomedesign.com
FRAZIER HOME DESIGN, LLC.
 900 RIDGEFIELD DR., SUITE 170
 RALEIGH, NC 27609
 OFFICE: (919) 424-7245

"THE KINGFISHER II"



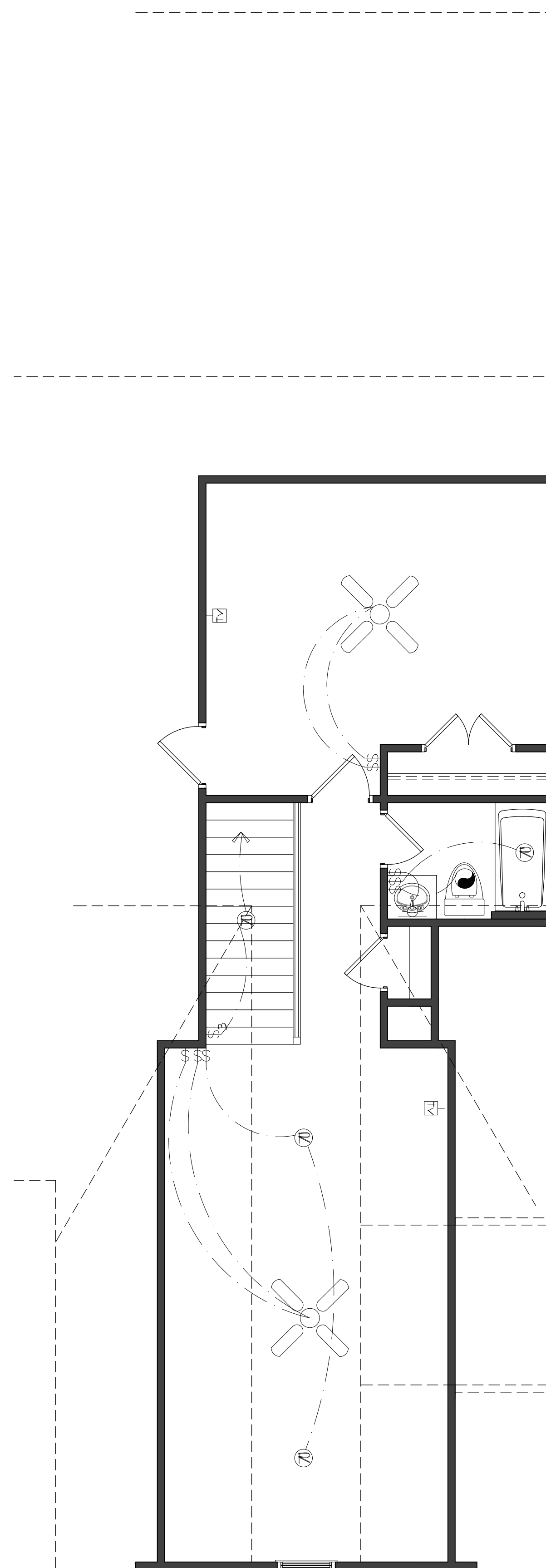
BELL RESIDENTIAL CO.

DATE: 10/10/2017
 DRAWN BY: JJ
 REVISION DATE:

FIRST FLOOR ELECTRICAL

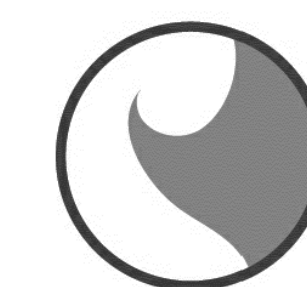
SHEET NO.
E1

ELECTRICAL LEGEND			
⌘	4-WAY SWITCH	⊖	WALL MOUNT INCANDESCENT BAR LIGHT
⌘	SINGLE POLE SWITCH	⊕	DUPLEX OUTLET
⌘	3-WAY SWITCH	⊕ _{CH}	COUNTER HEIGHT OUTLET RECEPTABLE
⊙	SURFACE MOUNTED LIGHT	⊖	DUPLEX OUTLET-SPLIT WIRED
⊖	CABLE JACK	⊖	EXHAUST FAN
⊖	1 BULB FLUORESCENT	⊖	EYEBALL LIGHT
⊖	2 BULB FLUORESCENT	⊖	SPOT LIGHT
⊖	PHONE JACK	⊖	RECESSED LIGHT
⊖ _{GFI}	GROUND FAULT INTERRUPT RECEPTABLE	⊖	CEILING FAN
⊖ _{220V}	220 VOLT RECEPTABLE		
⊖	WALL MOUNTED LIGHT		
⊖	ELECTRICAL PANEL		



PARTIAL SECOND FLOOR "A","B","C"
W/ OPTIONAL REC. ROOM/ BEDROOM #4
SCALE: 1/4"=1'

"THE KINGFISHER II"



BELL RESIDENTIAL CO.

DATE: 10/10/2017
 DRAWN BY: JJ
 REVISION DATE:

OPT. SECOND FLOOR ELECTRICAL

SHEET NO.
E2